

PLATE OPTIMIZATION 2.0 - BTL

OPTIMAL MATERIAL UTILIZATION

INCL. REUSE OF LEFT-OVER PLATES

The new Plate Optimization Module 2.0 guarantees optimal material utilization with minimal waste.

The system calculates the most ideal arrangement of any part on the plate, so that the left-over material is as small as possible. The plates are utilized to maximum capacity. The module also includes a clear warehouse management system.

The module can be used effectively for the following parts:

- Wall plates
- Flat bar plates
- Mixed plates for all parts
- BTL plates in general

It is possible to decide which individual parts are to be optimized. The user predetermines whether only one kind of part is to be combined per plate or whether several kinds of parts are to be mixed.

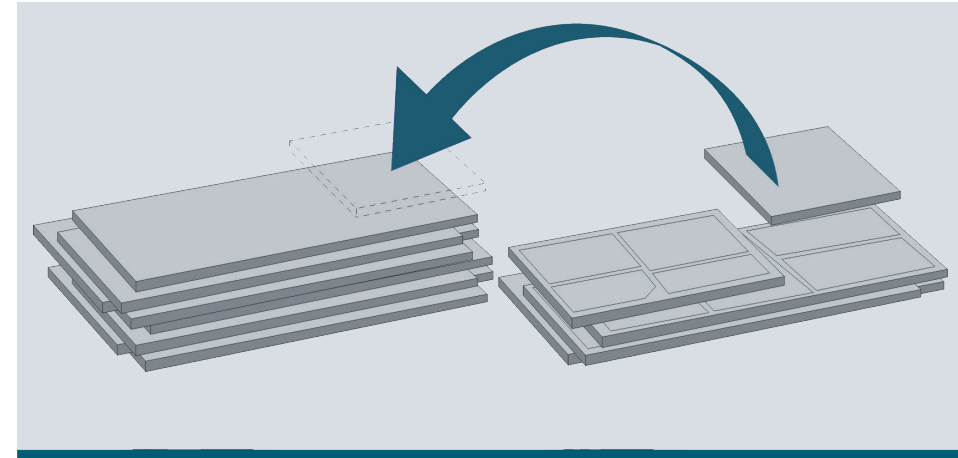
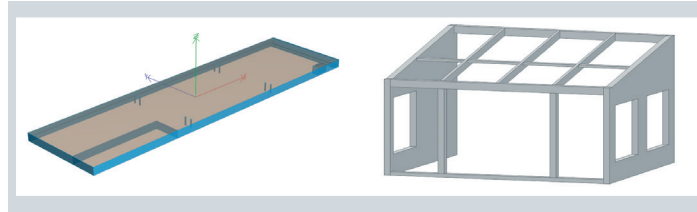


The optimization is possible to go with the grain or turned at a 90° angle.

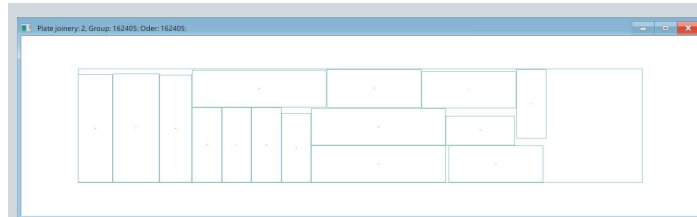
PLATE OPTIMIZATION 2.0 - BTL

Data is read in and optimized with one click

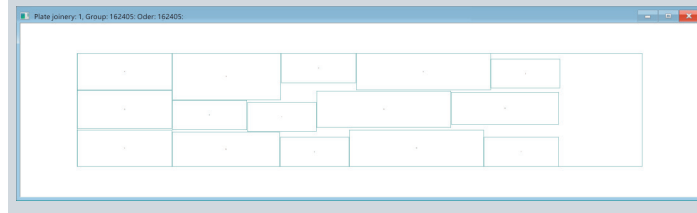
Once the user has selected which parts are to be optimized, the process is initiated with only one click. After only a few seconds a graphical representation of the optimized plate with the parts appears on the screen.



Neutral optimization:
For cases where the grain does not have to be considered.



General optimization:
The grain of the wood is considered.



Optimization examples:
BTL wall parts or flat bars.

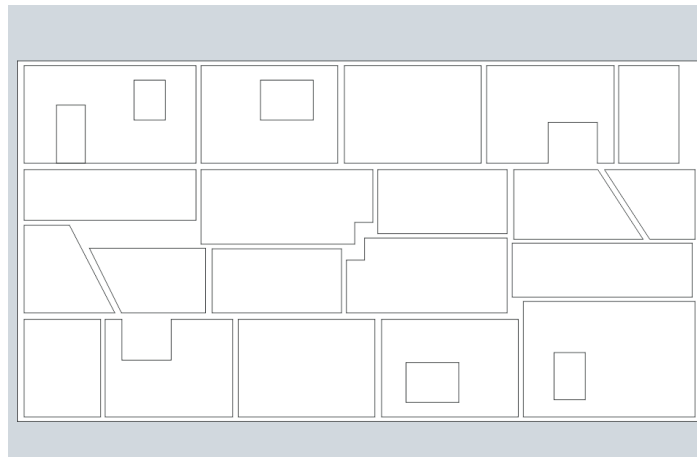
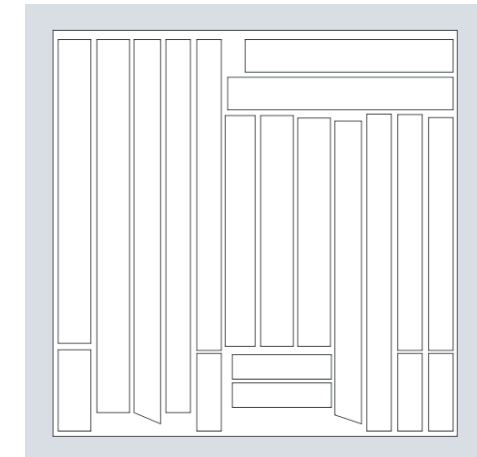
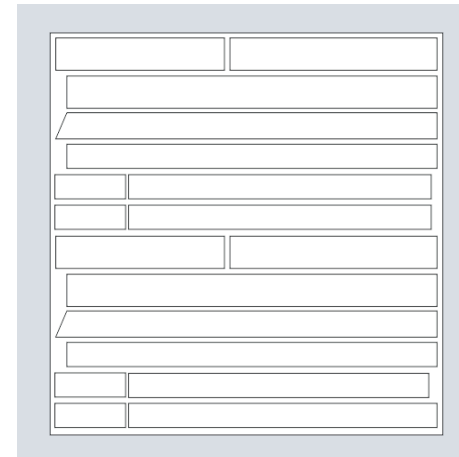


Table of boards

Material	Thickness	Width	Length	Laminations	Joinery elem...	Plates	Number
Buche	4.00 cm	150.00 cm	800.00 cm		X		4
Buche	15.00 cm	150.00 cm	800.00 cm			X	4
Buche	15.00 cm	260.00 cm	700.00 cm		X	X	5
Buche	15.00 cm	300.00 cm	600.00 cm		X	X	3
D-Fichte	5.00 cm	100.00 cm	450.00 cm		X		1
D-Fichte	5.00 cm	150.00 cm	450.00 cm		X		1

Buttons: Grundner, New, Delete, Modify, Copy, OK

Inventory is recorded in a table of boards. The user is able to select a plate or group of plates, to be used for optimization. Left-over plates are added back into the inventory.



Article 00323402



Compass Software Inc.
1170 Howell Mill Road, Suite 300
Atlanta, GA 30318
Phone +1 678 244 1535
mail@compass-software.com
www.compass-software.com